

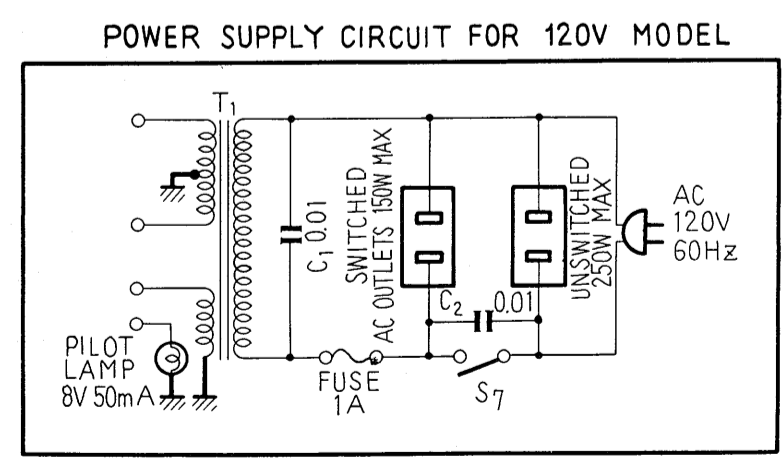
**NOTES**  
 V : DC VOLTAGE AT NO INPUT SIGNAL  
 ( V ) : DC VOLTAGE AT 16W/8Ω OUTPUT POWER  
 A : DC CURRENT AT NO INPUT SIGNAL  
 V : SIGNAL VOLTAGE NECESSARY FOR OBTAINING 16W/8Ω OUTPUT POWER (1kHz)

- SWITCHES**
- S<sub>1</sub> FUNCTION (PHONO position)
    - (1) PHONO
    - (2) TUNER
    - (3) AUX 1
    - (4) AUX 2
  - S<sub>2</sub> MODE (STEREO position)
    - (1) STEREO
    - (2) MONO
  - S<sub>3</sub> TAPE MONITOR (OFF position)
    - (1) OFF
    - (2) ON

- S<sub>4</sub> LOUDNESS (OFF position)
  - (1) OFF
  - (2) ON
- S<sub>5</sub> SPEAKER A (ON position)
  - (1) OFF
  - (2) ON
- S<sub>6</sub> SPEAKER B (ON position)
  - (1) OFF
  - (2) ON
- S<sub>7</sub> POWER (OFF position)
  - (1) OFF
  - (2) ON

**CAPACITORS**  
 IN μF UNLESS OTHERWISE NOTED P=pF

**RESISTORS**  
 IN Ω, 1/4W, ±5% TOLERANCE UNLESS OTHERWISE NOTED K=kΩ, M=MΩ



- 2SC1344
- 2SA725
- 2SA720
- 2SC1318
- 2SC789, 2SD234