

MOUNTING TEMPLATE FOR MODEL SX-1500TD

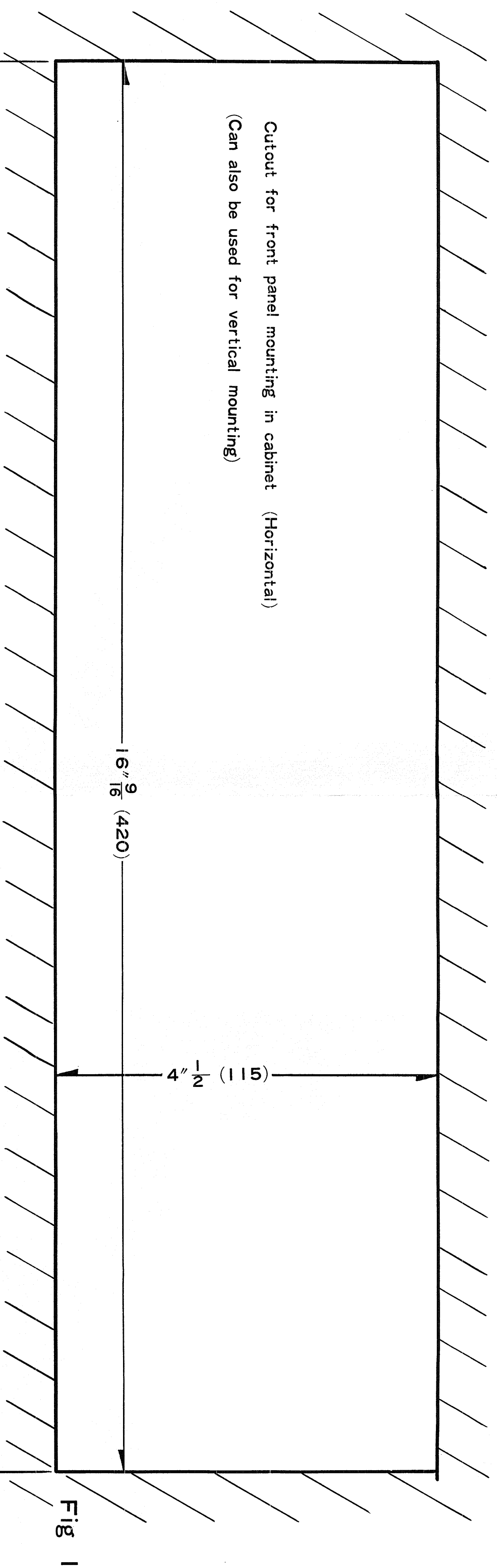


Fig 1

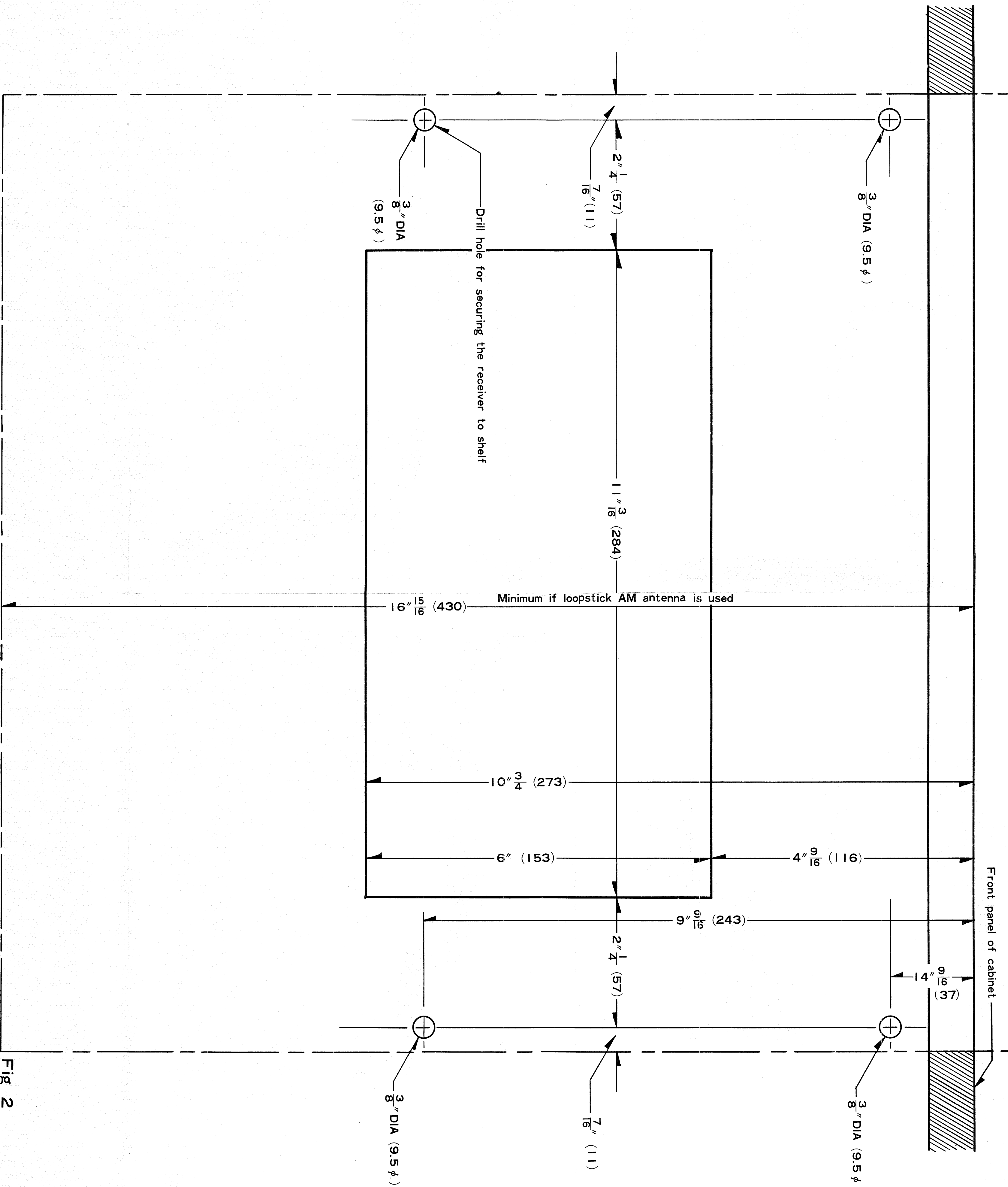


Fig 2

UNIT : inch (mm)

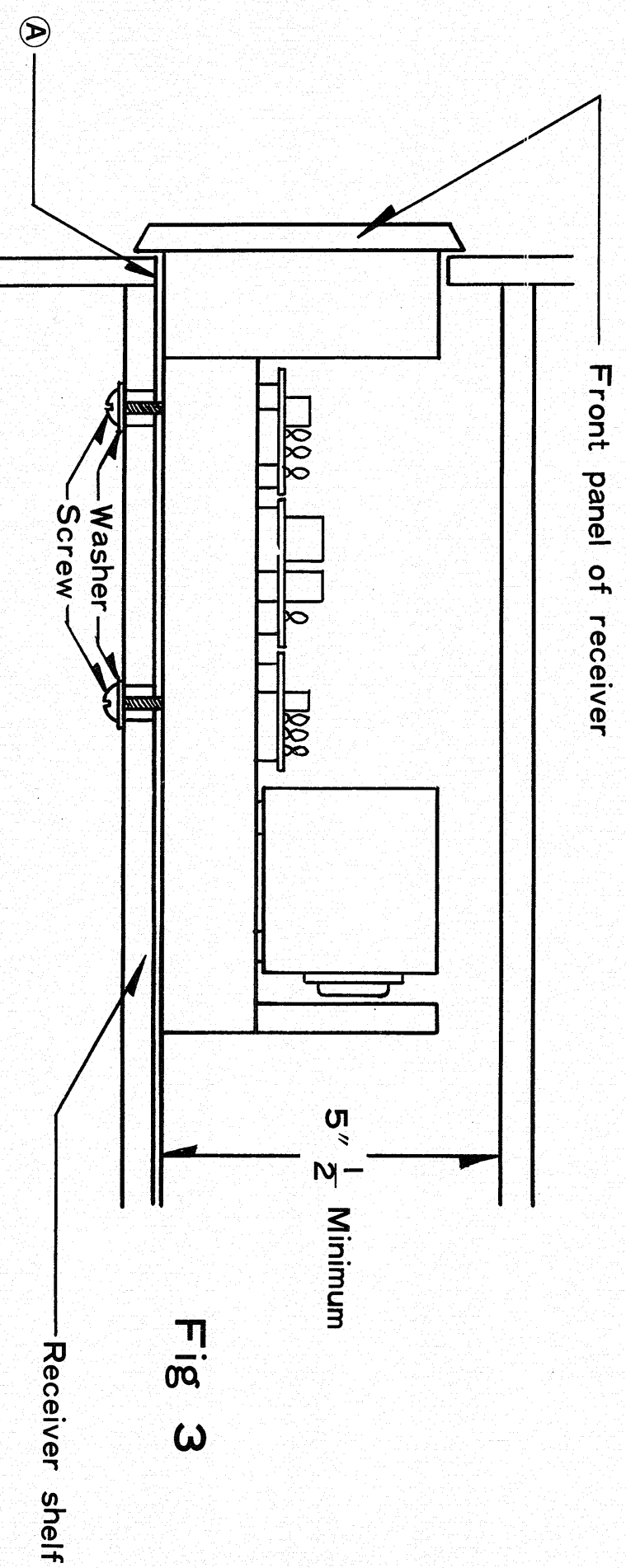


Fig 3

IMPORTANT INSTRUCTIONS

1. Follow the dimensions as shown. Measure template before using because of possibility of paper shrinkage.
2. Open the front panel of cabinet as shown in Fig. 1. The top of the receiver shelf should be higher than the bottom side of the cutout. (See Ⓐ in fig.3.)
3. Prepare the receiver shelf as shown in Fig.2.
4. Remove the four feet on the bottom plate.
5. Secure the receiver in position on the receiver shelf with the screws and washers provided.
6. If there is a shelf above the receiver, leave a space of at least 5 1/2" above the receiver shelf. (See Fig.3.) (for air circulation)